

IRONWOOD SUBDIVISION

A PLANNED UNIT DEVELOPMENT

IN SOUTH OGDEN CITY

PHASE 7

SCALE 1"=30'

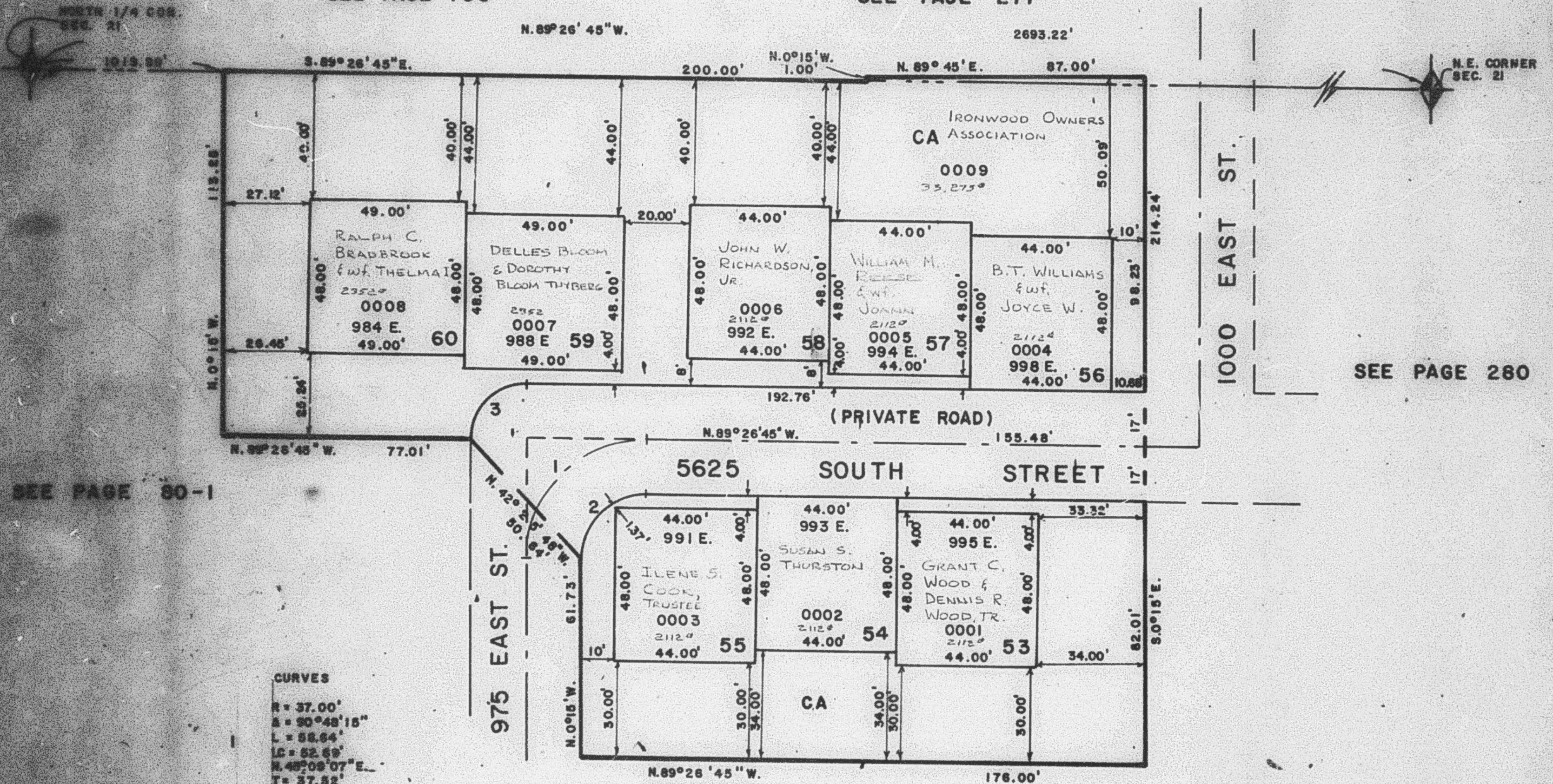
PREFIX 07-284

TAXING UNIT 27

EXCEPT AS OTHERWISE SHOWN
ALL LOTS OWNED BY:
IRONWOOD INC.

SEE PAGE 153

SEE PAGE 277



SEE PAGE 80-1

SEE PAGE 280

CURVES

1
R=37.00'
A=90°48'15"
L=52.64'
LC=52.69'
N.48°09'07"E.
T=37.52'

2
R=20.00'
A=90°48'15"
L=31.70'
LC=28.48'
N.48°09'07"E.
T=20.28'

3
R=17.00'
A=90°48'15"
L=26.94'
LC=24.21'
N.48°09'07"E.
T=17.24'

SEE PAGE 80-1

FOR COMPLETE ENG. DATA
SEE ORIG. DED. PLAT IN
BOOK 25, PAGE 84